



ANSTELEY JUNIOR SCHOOL

OUR SCHOOL

Introduction
Our school is great!
Striving for Excellence
Our Aims

page 1

EVERYDAY AT ANSTELEY

Uniform
PE kit and equipment
Jewellery
Lockers
Times of the day
Lunches
Holidays

page 6-7

THE SCHOOL COMMUNITY page 2

Teachers and Classes
Specialist Teachers
Governors
Parents
Children

ADMINISTRATION

Loose leaf section
Admission Policy
School Governors

LEARNING AT OUR SCHOOL page 3-4

National Curriculum
Meeting Individual Needs
Assemblies and RE
The Right to Learn

THE WIDER COMMUNITY page 5

Home/School Partnerships
The Local community



OUR SCHOOL

Introduction

Alton is a thriving market town situated in the rolling hills and green fields of Hampshire. Anstey Junior School is found to the northeast of the town. The school educates boys and girls aged between 7 and 11 and is maintained by the Education Department of Hampshire County Council. Management is delegated to the school under the provisions of Local Management of Schools.

The School was opened in 1957 and was remodelled in 1995 in order to add a new school entrance, library and music room to the existing building.

Anstey Junior School is set within spacious grounds which include two large playing fields and several environmental areas. There are also two separate playgrounds and an adventure play area for the children to enjoy. To encourage games, both playgrounds have imaginative markings, along with benches in quiet and shaded areas. Children are able to make full use of the fields when the weather is fine.

The eight classrooms within the school are split over two floors. The school hall is well equipped with PE apparatus as well as lighting, stage and sound systems which are used to good effect during school productions. The school library, music and drama room and ICT are used to enhance children's learning.

Our school is great!

Staff, pupils and parents recognise that Anstey Junior School is a good school. This has been confirmed by two successive Ofsted inspections.

The Inspectors say:

"... this is a good school which provides an appropriate and high quality educational experience for its pupils. The staff and governors show a strong commitment to the school and they form a united and strong team."

"Relationships throughout the school are very good and there is an excellent ethos for learning"

Whilst we recognise the many successes highlighted by Ofsted, we strive to add greater value to all children's education at Anstey Junior School.

Striving for Excellence

Our Aims:

- 1 To provide an education of the highest quality for each child.
- 1 To deliver a broad and balanced National Curriculum
- 1 To provide a caring, encouraging environment where each child is valued as an individual and is happy and confident to develop their potential.
- 1 To have high expectations of academic excellence whilst promoting the moral, cultural, social and physical development of our pupils.
- 1 To prepare pupils for their future education and adult life by encouraging an enthusiastic and independent approach to learning, the development of social skills and a positive self-image.
- 1 To foster a successful partnership with parents, carers and the wider community to promote the aims of the school.



THE SCHOOL COMMUNITY

Teachers and Classes

At Anstey Junior we teach the children in single age group classes. At present, we have eight classes with two classes in each year group. Staff and children are supported by a dedicated team of Learning Support Assistants.

Specialist Teachers

At Anstey Junior we believe it is important, where possible, to support the creative curriculum and so, in addition to class teachers, we have employed specialist teachers to work in our school. All the children in the upper school are taught Music regularly by a Hampshire Music Teacher. Throughout the school year, all classes receive specialist Art teaching from our Fine Arts teacher.

Governors

The role of the governors is to work with the Headteacher, staff and Education Authority to secure the best possible education for all the children at Anstey Junior School. A full governors' meeting is held each half-term. Copies of the minutes are placed on the entrance notice board. Each year, usually in the autumn term, the governors produce an annual report and hold an Annual General Meeting to describe the past year and answer questions. All parents are invited to join the meeting.

Parents

Parental help is appreciated in all areas of school life. The Parent Teacher Association assists the school in various ways, for example through fund raising events such as school discos and the Christmas Fair. The PTA usually raises about £3,000 annually. The PTA also organise termly 'Tea Afternoons' where parents can pop in for a cup of tea and a cake, meet the teachers, other parents and their own children. All parents are automatically members of the PTA. An Annual General Meeting is held in the Autumn term when the committee is elected.

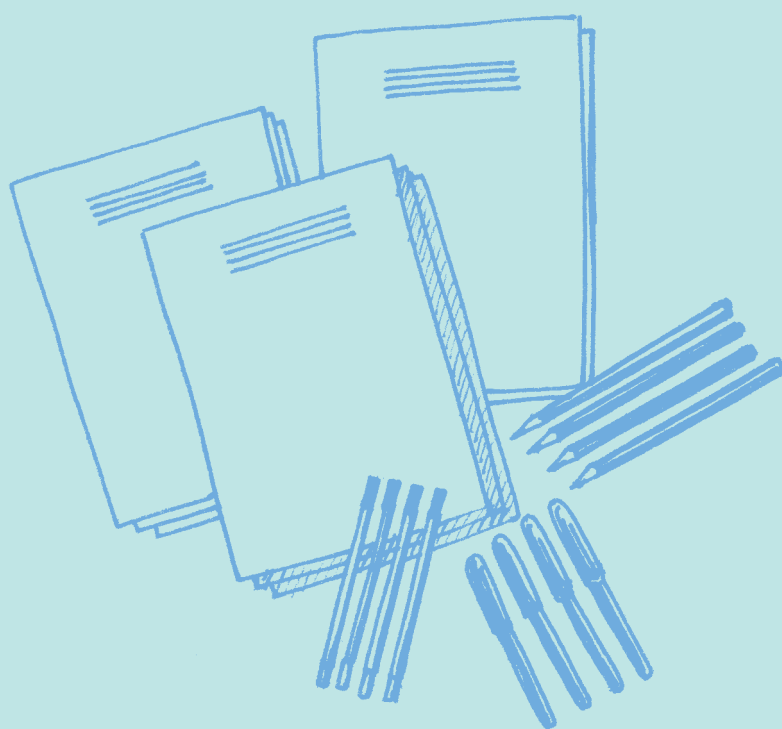
Children

Each class has an elected representative on the School Council. The School Council meets monthly with the Headteacher to discuss points which have been raised by their classmates. The School Council has been involved in making decisions such as which charity the school should support, what markings should be painted onto the playground and how to spend the PTA funds to enhance our school grounds.

We believe it is important to foster a sense of responsibility in our children which is why all Year 6 pupils are given the opportunity to be a Prefect. Prefects work in teams on a weekly basis that is rotated throughout the year. Our prefects take responsibility for roles such as ringing the school bell on time and distributing registers.

In September of each year, house captains (Year 6 pupils) are elected by other children in their team. All pupils are members of a school team, Christchurch (yellow), Netley (green), Romsey (blue) and Winchester (red).

All Year 6 children participate in a Business Enterprise project to raise money for the charity of their choice.



LEARNING AT OUR SCHOOL

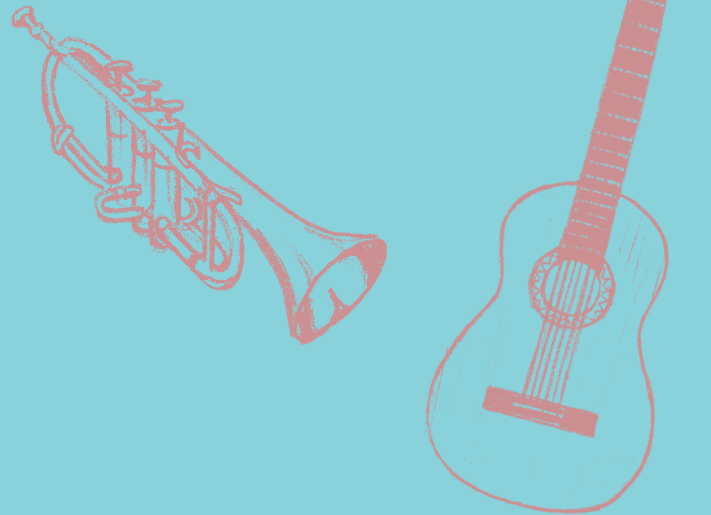
National Curriculum

At Anstey Junior School we have embraced all the new curriculum initiatives. All children are encouraged to be self-motivated, self-disciplined and independent learners. Staff work hard to produce schemes of work that will excite and motivate the children. First hand experience is a key feature of their learning and children experience a variety of teaching methods and learning strategies, including; whole class lessons, group work and individual tuition. We want all children to achieve their full potential and become life long learners. It is therefore crucial that a broad and balanced curriculum is provided, maintaining high levels of teaching and learning in all the National Curriculum subjects, religious education and personal, social and health education.

Specialist teachers enhance the Art and Music curriculum and visiting adults from the local community and further afield connect children's learning to the society in which they live. This is coupled with a wide-ranging programme of visiting performers, specialist curriculum focus weeks and educational visits. At present trips and speakers include:

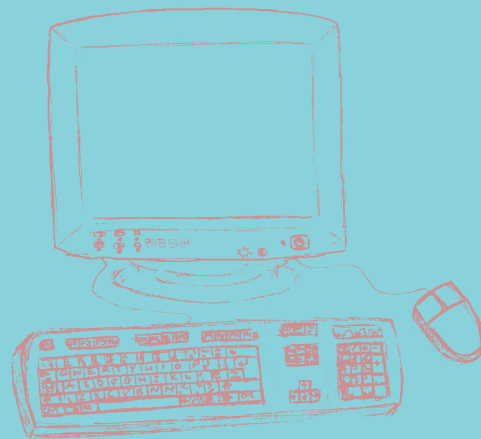
- Y3 Marwell Zoo, Alton Market, St. Lawrence Church, Kings Pond, Greek Day
- Y4 British Museum, Fishbourne, Selborne, Roman Day (with soldier), Curtis Museum, Allen Gallery, visiting archaeologist.
- Y5 Kew Gardens, Old Portsmouth, Tudor costumes and actors, Annetts Farm, Curtis Museum, Allen Gallery, speakers from Antarctic Expedition, Residential trip to Swanage
- Y6 Manor Farm Victorian experience, Structures Challenge, Science Fair, Food Technology at Pizza Express, Think Safe at Queen Elizabeth Country Park, Residential trip to Calshot.

Our excellent facilities mean that a full range of sporting activities can be enjoyed by the children, competing in teams or for personal targets. Two year groups follow a swimming programme at the Sports Centre and dedicated staff and friends of the school run a varied range of after school clubs.



Children have an opportunity to learn a musical instrument at school via the Hampshire Music Service, however, due to their popularity, there may be a waiting list. A wide range of instruments are taught to children in small groups. These extra-curricular lessons are on a fee-paying basis. Generally parents need to provide the instrument for the pupil to play and purchase any music needed for practice.

Education at our school is about providing for the needs of the whole child. We seek positively to develop values of honesty, integrity, responsibility and co-operation with others. We want our pupils to develop and become good citizens. Our assemblies make an important contribution to developing pupils' appreciation of moral, social and cultural values.



Meeting Individual Needs

Meeting the needs of the individual child through the effective management of the resources provided is at the heart of our special provision. Identification and assessment are an essential part of the process of meeting individual needs.

A child may have special educational needs either throughout, or at any time during his or her school career. These needs will be identified, assessed and monitored through the Special Needs register. Children on Step 2 or Step 3 of the SEN Audit will have an Individual Education Plan (IEP).

A range of teaching methods are used to meet the needs of all the children in our care. Differentiation occurs at all stages of planning and additional resources are allocated according to the needs of the child. This may include LSA support.

We also have a register of able children and a 'Challenge Club' which runs for children who enjoy learning of an academic nature beyond the school day. The children participate in mathematical and science investigations, extended writing and other practical problem solving activities.

Assemblies & RE

The school has assemblies each day. It is an important part of our schools ethos and work. There are three whole school assemblies, one upper/lower school assembly and one shorter classroom assembly each week.

Religious Education is taught regularly to all pupils by their class teacher following the current Hampshire syllabus.

If parents, on grounds of conscience, wish their child not to attend assemblies, or wish to withdraw them from RE, they may do so by informing the head teacher in writing.

The Right to Learn

The children's behaviour at Anstey Junior is good. The children are polite, well mannered and caring. The staff are concerned with the personal and social development of your child as well as their academic progress. We try to combine high expectations with a sympathetic approach. The school has a clear Good

Behaviour Plan that is consistent throughout the school and regularly updated.

This plan is an integral part of school life and sets clear expectations for behaviour in and around the school, encouraging all children to take responsibility for making sensible choices. This is reinforced with a wide range of rewards and sanctions. We believe clear expectations and consistent practice help children to develop self discipline. Copies of the Good Behaviour Plan are available from the School Office.

Problems do crop up on occasions and we involve parents at an early stage. If it is deemed necessary to exclude a pupil from attendance at the school, the pupil's parents will have the right to make a representation to the Governing Body if they consider the exclusion to be unreasonable. Parents may (on request) obtain from the School Office a copy of the Procedure for the Exclusion of Pupils.



THE WIDER COMMUNITY

Home/School Partnerships

At Anstey we work hard to nurture a positive partnership between the school and home.

In order to support this partnership we like to have shared aims and keep everyone well informed. For example, every term each year group sends home a work programme informing parents of topics and work to be covered. In addition, the school newsletter is sent home on a regular basis to provide dates of forthcoming events and to let you know of any developments within the school.

Each child has a home-link book (or a homework diary in Year 6) that is used to relay messages between home and school. Children will record any messages or reminders to go home. The home-link book may also be used as a means of communicating with your child's class teacher. Should you wish to discuss any issues in person then please feel free to make an appointment, we are always happy to see you and will arrange a meeting at a mutually convenient time.

On a more formal basis parent consultation evenings are held twice a year, in October and February, to discuss social and academic progress. Children are invited to attend these consultations so that targets can be shared with parent and child together. We have found this to be very successful in that it allows parents to understand the targets being set as well as enabling children to take ownership of their work and progress. Written annual reports are sent home at the end of the Summer Term and these describe social and academic progress throughout the year. Children's levels of attainment in core subjects are reported against national expectations for all children within their age range.

When your child joins us at Anstey they, and you, will be asked to sign a home/school agreement. This ensures that expectations are consistently shared so school and home can work together to shape your child's future for the better.

The Local community

Below are some examples of links within our local community

Links with churches in Alton

Anstey has links with a number of churches in the town such as St Lawrence and the Evangelical Free Church. The links are maintained by visiting local churches as part of the curriculum, having local preachers visit the school to take assemblies and by holding the school's Christmas and End of Year services in a variety of Alton churches.

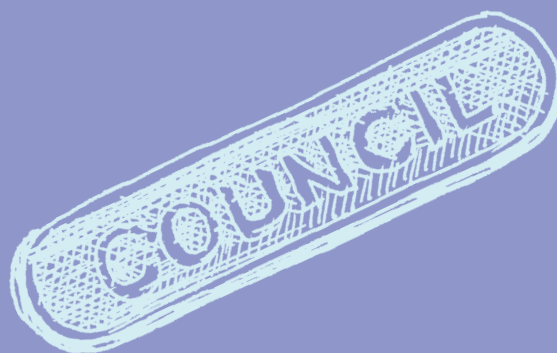
Links with the Allen Gallery and Curtis Museum

At Anstey we have many visits to the gallery and museum. Members of staff from the gallery and museum work closely with the teaching staff at Anstey to help us enrich the curriculum and to provide talks, tours, exhibitions and slide shows for the pupils.

Other links with the community

Other links continue with a number of local businesses including Pizza Express and Sainsbury's. Children have visited these as part of their curriculum work. Various shops and local businesses donate prizes for our Christmas Fair. Retired people in the area attend our Harvest Festival and we deliver food parcels afterwards in the community.

The Community Policeman, makes regular visits as part of our Personal, Social and Health Education.



EVERYDAY AT ANSTEY

Uniform

At Anstey we are very proud of our school and our pupils; this is reflected in our smart, practical uniform. Anstey children are easily recognisable and have a real sense of belonging, of being part of a team. Our school uniform, chosen by our Parent Teacher Association, can be easily obtained anywhere. Sweatshirts can also be ordered through the school and a uniform shop is held regularly; details are given in the school newsletters. All uniform and equipment should be clearly labelled.

At Anstey our uniform consists of:

- 1 White shirt / blouse.
- 1 Black or grey school trousers / skirt.
- 1 Green jumper, sweatshirt or cardigan.
- 1 White or grey socks.
- 1 Brown/grey or black shoes.
- 1 For safety it is important that children wear sensible shoes for school. Girls should have low heels; a good indication of suitability is whether or not they are comfortable for running in.
- 1 In the summer the children have the added option of wearing tailored shorts or green and white gingham dresses.

PE kit and equipment

- 1 Plimsolls (for apparatus work) and/or trainers (for outdoor games).
- 1 Black shorts.
- 1 A plain T-shirt (these are available in house team colours and can be bought from the school).
- 1 PE kits should be kept in a small bag
- 1 In winter, tracksuit bottoms and a plain sweatshirt may be worn.
- 1 Children should have a change of shoes for PE and trainers should not be worn all day. Girls wearing tights in the winter should bring a pair of socks to wear with trainers during PE.
- 1 All children are advised to bring a small bottle of water to be kept in the classroom.

Art can be a messy part of the school curriculum and in order to keep your child's uniform paint free we recommend that each child has an adult's old shirt or long sleeved top that can be used as an art-shirt.

Coats and outer garments are not part of the school uniform and are therefore chosen by you and your

child. It is important that your child has a warm coat/waterproof in the winter and when going on school trips or swimming.

Jewellery

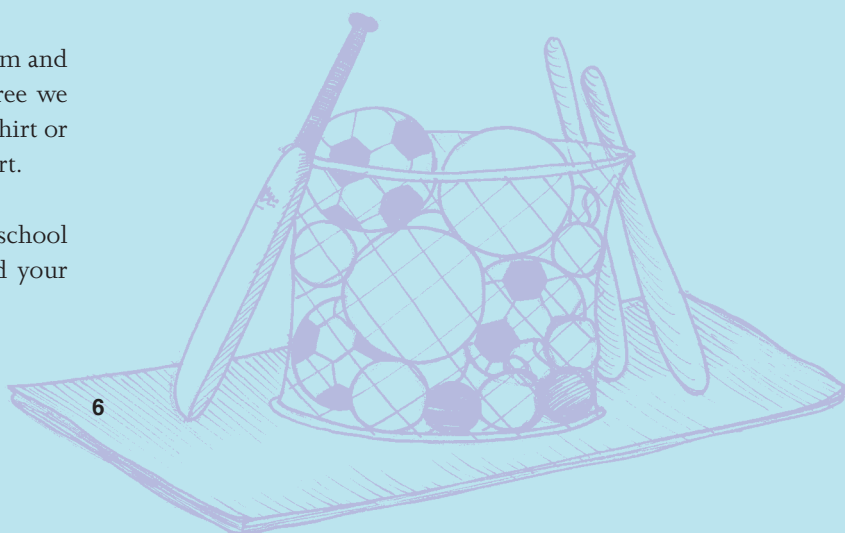
If children have pierced ears or other piercings, they are allowed to wear studs or small sleepers. Children should be able to remove and replace earrings themselves so that they can be taken out for safety in PE. Jewellery does not form part of the school uniform and children must take responsibility for any watches or earrings etc. that they choose to wear to school. For safety reasons other items of jewellery such as rings and bracelets are not allowed. Hair braids and fashion hair accessories are also considered to be a safety risk and are therefore not permitted, along with make-up and nail varnish.

Lockers

Every child has his/her own personal locker and coat hanging space. The lockers are used to store school bags, PE kits and swimming equipment when required. With each year group sharing a cloakroom it is vital that children's belongings are able to fit into their locker. A small rucksack is adequate for the necessary school equipment. Each locker measures 23cm (9") x 23cm and is 45cm (18") deep.

Times of the day

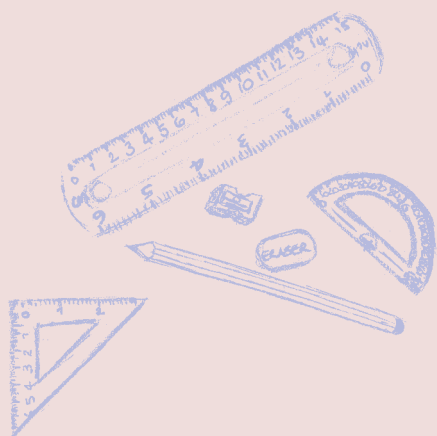
Children are welcome to come into school from 8.45am and are expected to be in their classrooms to begin work by 8.50am. Lunch is between 12.30pm and 1.25pm with the children finishing their afternoon session at 3.05pm. The playground is not supervised before school starts.



Lunches

At lunchtime, children have the opportunity to bring packed lunches or have a school provided dinner. At the beginning of each day children choose their lunchtime meal from a varied selection of school meals. This ensures that all children have the meal of their choice regardless of the time they arrive at lunch. All meals are cooked daily on the premises.

During warm and dry weather the children are able to picnic on the front field. In the summer term the school meal choices will include a packed lunch bag which can be eaten outside. At lunchtime all children can buy a variety of healthy snacks from the school kitchen. Children are encouraged to bring in still drinks for lunchtime and water is available for all children at all times during the school day. If you think that your child may be entitled to free school meals please ask at the school office for an application form.



Holidays

In order for children to make the maximum progress possible we discourage parents from booking holidays during term time. Children are able to have up to ten days authorised absence a year. Forms are available from reception and will need to be completed giving reasons why a child's absence is necessary. Authorisation will not be given for Year 6 pupils to take holidays during KS2 SATs week.

If you have any difficulty providing your child with any of the essential clothing, limited financial assistance may be available to you depending upon your income. For further details please contact: The Education Welfare Officer, Birch House, Barley Way, Fleet, Hampshire GU13 8YB.

**We hope you have found this brochure
a useful introduction to the school.
For more details or to arrange a visit,
please contact our Headteacher on 01420 84486.**